

# MONTHLY MEMBERSHIP PROGRESS REPORT

District 3233G1

Results as of: 6/30/2020

GMT:

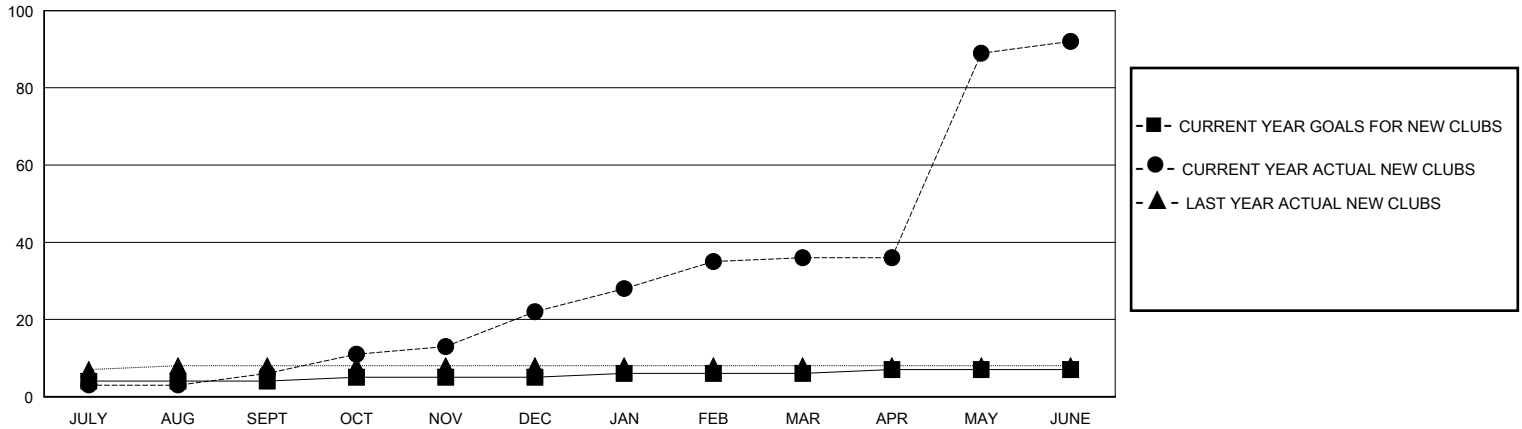
LOCATION INDIA

GMT CA

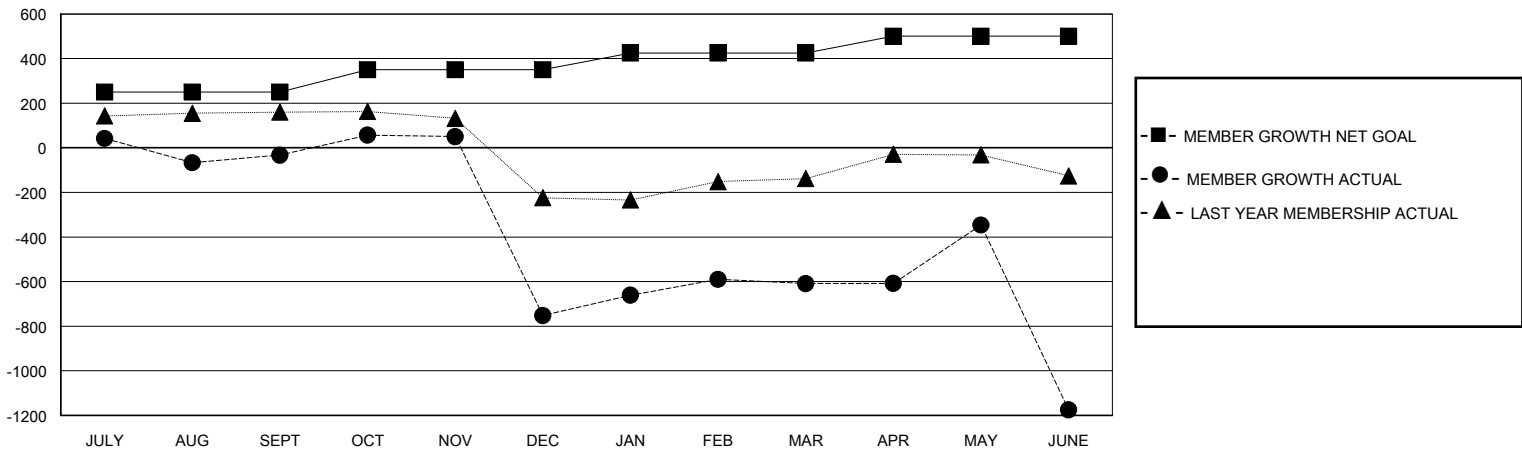
Clubs			
RESULTS FOR 2019-2020			
QUARTER	NEW CLUB GOAL	NEW CLUBS	DROPPED CLUBS
JULY/AUG/SEPT	4	6	1
OCT/NOV/DEC	1	16	7
JAN/FEB/MAR	1	14	0
APR/MAY/JUNE	1	56	0

Members			
RESULTS FOR 2019-2020			
QUARTER	MEMBER GROWTH NET GOAL	MEMBER GROWTH ACTUAL	DROPPED MEMBERS ACTUAL (including transfers)
JULY/AUG/SEPT	250	128	151
OCT/NOV/DEC	100	300	979
JAN/FEB/MAR	75	203	46
APR/MAY/JUNE	75	351	888

GOALS AND ACTUAL NEW CLUBS CUMULATIVE



GOALS AND ACTUAL MEMBERS CUMULATIVE



DROPPED CLUBS: 8

153 CLUBS OF 222 ADDED 1 OR MORE NEW MEMBERS

GENDER DISTRIBUTION

MALE 2,224 (59.35%)  
FEMALE 1,523 (40.65%)

DROPPED MEMBERS

DECEASED	13
CLUB CANCELLED	960
OTHER	1,091
<b>TOTAL</b>	<b>2,064</b>

[CLICK HERE FOR CUMULATIVE MEMBERSHIP DATA](#)

TOTAL FAMILY UNIT MEMBERS	1,236
FAMILY MEMBERS PAYING HALF DUES	695